



FURUKAWA TAKAHARU

# CARBON RISER

- META DX
- RADICAL PRO
- INNO CXT
- CX7





# META DX TECHNOLOGY

META DX features are functionally upgraded with groundbreaking structural design. The special design of the META DX riser adapts materials developed by WIAWIS technology maximizing accuracy and stability at the moment of shooting.

## NOBEL PRIZE-WINNING GRAPHENE

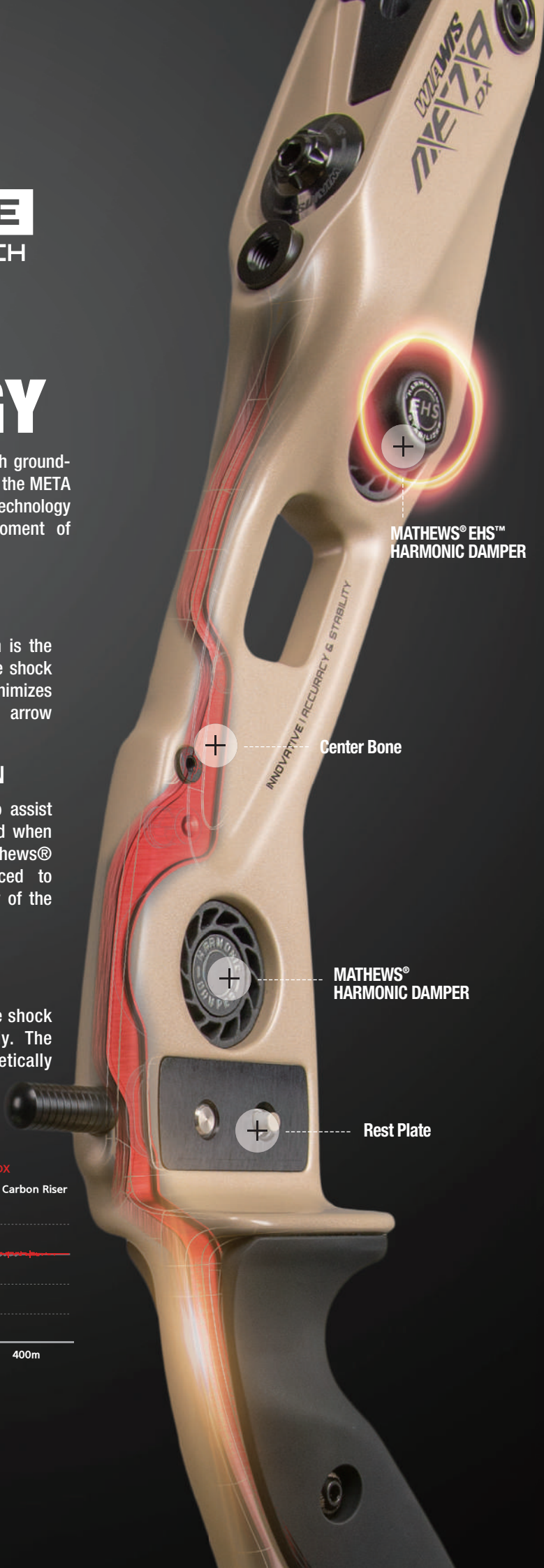
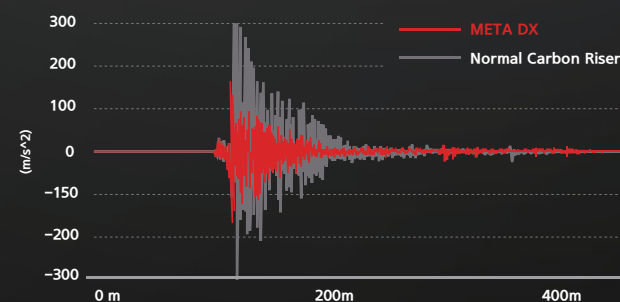
META riser is made of graphene carbon which is the best carbon material of WIAWIS. It improves the shock resistance caused by shooting and therefore minimizes unnecessary movement, resulting in improved arrow grouping.

## BETTER TORQUE FREE CONSTRUCTION

In addition, Special Steel has been inserted to assist in the reduction of vibration and torsion caused when force is transferred from the bow limbs. The Mathews® EHS™ dampening system has been introduced to improve stability of the shoot feeling, accuracy of the bow and ultimately arrow grouping.

## ADVANCED STRUCTURAL DESIGN

Meta DX riser has been designed to reduce the shock and vibration after shooting more effectively. The structural design is more dynamic and aesthetically pleasing than previous design products.



# META DX

LENGTH	25 inches
WEIGHT	1380 g
TYPE	RH / LH
MATERIAL	Graphene / Nano Carbon

**Meta Cap**  
 META CAP weighs 9 grams and once you change all 3 original harmonic dampers, you can reduce a riser weight by a total of 47 grams. (Ref. MATHIEWS® EHS™ HARMONIC DAMPER weighs 32 grams and MATHIEWS® HARMONIC DAMPER weighs 10 grams respectively.)



All the weight parts need to be removed for the Barebow division (The rubber parts can be inserted into the riser)







# RADICAL PRO TECHNOLOGY

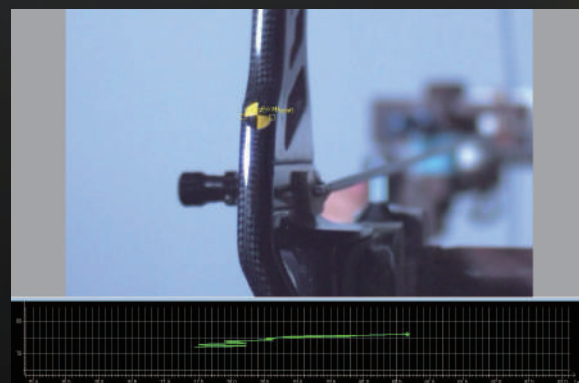
## SPECIALLY DESIGNED CENTER SUSPENSION OF RADICAL PRO

The Radical Pro riser has been designed like no other riser specifically to reduce vibration and bow torque when shooting. Unlike a dampener that absorbs vibration after shooting but has no effect on bow torque at the moment of shooting. Ultimately this assists to better arrow grouping by drastically reducing bow torque.

Radical Pro riser shows improved properties on vibration absorption at the same 44lbs limbs set-up.

## HERE'S THE RADICAL PRO NANO CARBON RISER

In addition, Special Steel has been inserted to assist in the reduction of vibration and torsion caused when force is transferred from the bow limbs. The Mathews® EHS™ dampening system has been introduced to improve stability of the shoot feeling, accuracy of the bow and ultimately arrow grouping.



# RADICAL-PRO

LENGTH	25 inches
WEIGHT	1300 g
TYPE	RH / LH
MATERIAL	Graphene / Nano Carbon

## HIGHEST SHOCK ABSORPTION

RADICAL PRO riser is made by nano carbon technology applying the innovative material of graphene. Its Center Suspension improves rigidity and durability while effectively controlling shooting shock and minimizing bow torque. Also, a specially designed Sound Amplification board for the clicker provides clear sound in 3000-6000Hz that is the most audible frequency to the archer and making clicker timing regular. This will enhance better arrow grouping.

## COLORS



All the weight parts need to be removed for the Barebow division (The rubber parts can be inserted into the riser)



# INNO CXT TECHNOLOGY

Unique functions of the WIN&WIN INNO CXT bow

WIN&WIN launches various lengths of risers (23/25/27 inches) so that the archers can choose the proper bows for themselves.

WIN&WIN launches various lengths of risers (23/25/27") and widens the range of archers' usage according to draw length.

## Weight control system

The riser weight is adjustable so the archers can customize the weight to fit their desire.

## A more convenient Center-Shot adjustment system

You can conveniently adjust the limb and riser alignment without unstringing the bow. In addition, a highly specialized washer was designed to prevent the limb bolt from randomly coming loose.

## Upgraded accuracy

WIN&WIN engineering solved simple problems such as twisting and bending during the molding process. Now it is possible to have virtually perfect limb and riser alignment with WIN&WIN bows.

## The ideal grip

WIN&WIN's new grip is made to find the correct pressure point for the archer. It is especially designed to take into consideration the joint position of the each finger, so it creates a very stable grip position and increases arrow grouping.



# INNO CXT

## UNIQUE DESIGN OPTIMISING CARBON

The CXT riser has been in production for many years and has been a very popular riser winning medals at all levels.

LENGTH	23 inches	25 inches	27 inches
WEIGHT	1120 g (LIGHT:1070 g)	1200 g (LIGHT:1150 g)	1260 g (LIGHT:1210 g)
TYPE	RH	RH / LH	RH
MATERIAL	Nano Carbon		

## COLORS



Weight Control System  
\* 4 flat weights are included  
(1 flat weight : 25 g)



# CX7

The CX7 riser is designed and manufactured with carbon prepreg where carbon fiber is distributed evenly in all directions. The rigid design emphasizes the features of the stable carbon material riser to minimize shooting errors.

LENGTH	25 inches
WEIGHT	1300 g
TYPE	RH / LH
MATERIAL	Carbon Composite

## COLORS



13mm

TILLER BOLT



DEFAULT GRIP

WIAWIS



CARBON RISER

ALUMINIUM RISER

ACCESSORIES

LIMBS

APPAREL

WIAWIS

WIAWIS

WIAWIS

WIAWIS

WIAWIS





PETERS  
CANADA

# ALUMINIUM RISER

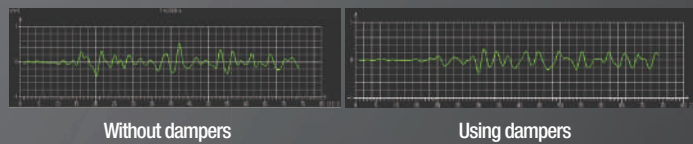
ATF-DX  
ATF-X  
WINEX



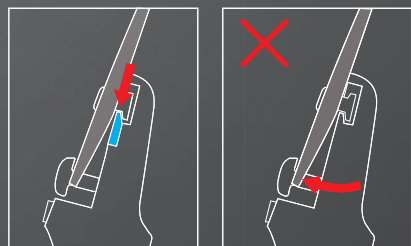
# ATF-DX TECHNOLOGY

## APPLIED EHS DAMPING SYSTEM

ATF-DX was designed by combining technology and experience of WIAWIS and completed with precision. The EHS damping system was introduced to reduce shock and vibration at the moment of release. With the EHS damper, the shock and vibration of shooting is greatly reduced, making it possible for an archer to obtain more stability of their shot.

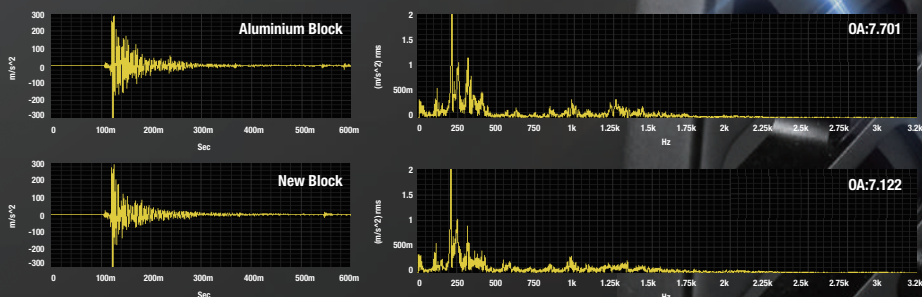


## SPECIALIZED PLASTIC ADDED AS A COMPONENT FOR THE ALUMINUM HYBRID BLOCK



After release, the impact from the string is directed vertically from the limb's contact point of the riser block. Super engineered plastic with excellent mechanical properties of the block adds resistance to heat, shock, along with wear and tear.

Minimizes shock and vibration occurring at the moment of release by about 8%, Noise prevention by the friction of metal.



# ATF-DX

ATF-DX introduces the same dampers used in the META-DX handle to increase effective reduction in vibration caused by the impact at the moment of shooting. It minimizes unnecessary movement of the bow to assist with improvement of arrow grouping. The ergonomically designed grip provides a positive sensory feeling, increasing stability. Rest plates are adjustable as 4 levels to suit your arrows and your tuning.

LENGTH	25 inches , 27 inches
WEIGHT	1360 g / 1430 g
TYPE	RH / LH
MATERIAL	Aluminum / CNC machining

## COLORS



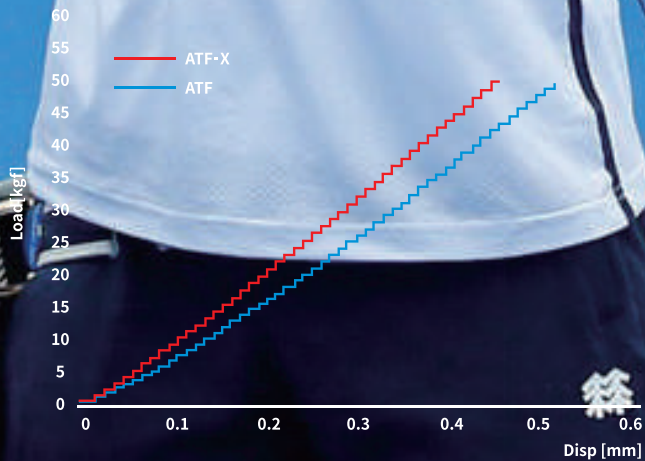
13mm  
TILLER BOLT  
DEFAULT GRIP

WIAWIS





# ATF-X TECHNOLOGY



## ATF-X FEATURES

To enhance the features of the aluminum riser while maintaining the same net weight as the ATF riser, it efficiently improved stiffness and anti-twisting so that it is more stable shooting with less vibration and reduced bow torque.

When shooting with ATF and ATF-X risers on the same 44lb limbs, ATF-X riser is less vibration than ATF riser.



## ATF-X

ATF-X is a reinforced model of the ATF riser which was used by top world class athletes. Through the balance of the riser design, ATF-X makes the shooting feel more powerful. Anti-torsional 45-degree cross design.

<b>LENGTH</b>	25 inches , 27 inches
<b>WEIGHT</b>	1280 g / 1350 g
<b>TYPE</b>	RH / LH
<b>MATERIAL</b>	Aluminum / CNC machining

## COLORS







# WINEX

## THE IDEAL BOW FOR SERIOUS SHOOTING

WINEX riser is a long-running riser which is designed to be faithful to the most basic role of the riser. Several new designs have been introduced and have been loved by many archers.

LENGTH	23 inches	25 inches
WEIGHT	1080 g	1140 g
TYPE	RH	RH / LH
MATERIAL	Aluminum	

### COLORS



13mm  
TILLER BOLT

DEFAULT GRIP



# INNOVATIVE WIAWIS

WIAWIS's technology through differentiated materials, design and manufacturing skills with serious quality control is leading the world in bow innovation.